

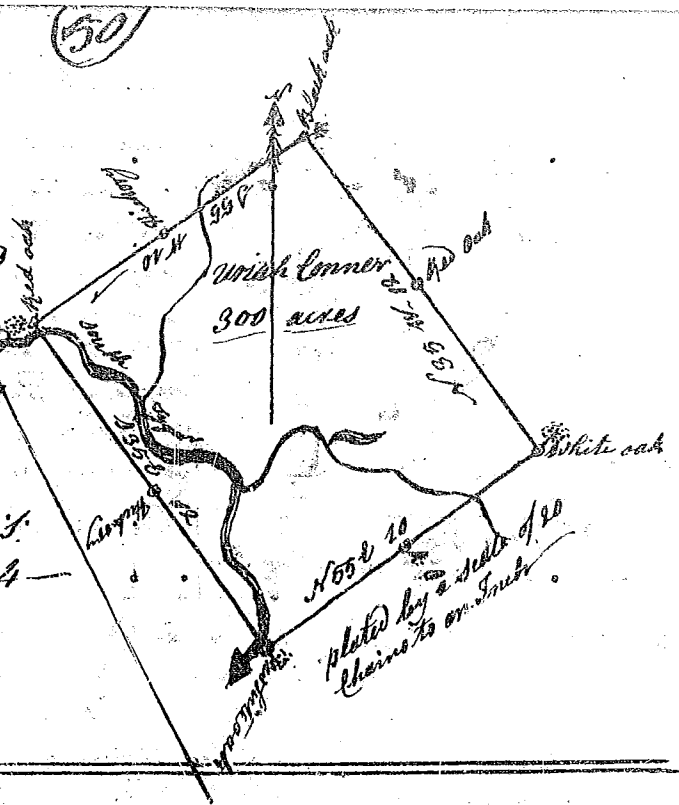
State of South Carolina

(50)

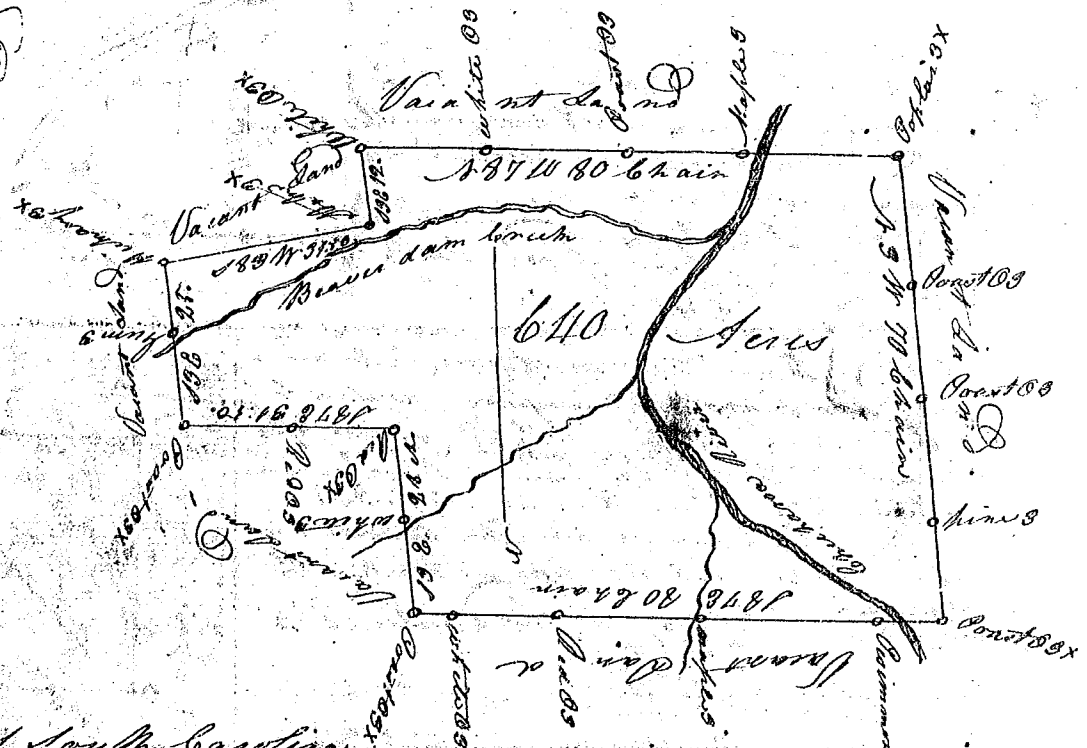
Pursuant to a warrant to me directed by John Thomas Esq. Commissioner of Locations for the district of the North side of Saluda. I have surveyed & laid out unto Black Corner a tract of land containing 300 acres, Situate lying being above the Old Indian boundary on both sides of South Sugar River, and known by the name of Kings improvement bounded on the south corner by Robert Nelsons land on every other by vacant land, and hath such shape and Acreage as the above plat represents.

Surveyed & Certified by me this 26<sup>th</sup> day of June 1784  
James Seaborn D.S.

Recorded the 21<sup>st</sup> day of July 1784



The corner by north of the river by stream on bank



State of South Carolina

Pursuant to a warrant from John Thomas

Esq. Commissioner of Locations Dated May the 21<sup>st</sup> 1784. I have Admeasured and laid out unto George Salmon a tract of land containing six hundred and forty Acres, Situate in Pinty's District west of the Old Boundary on both sides of Chickasaw River of Saluda well known by the name of Hosties Camp. Bounding on all sides by Vacant Land and hath such form and measure as the above Plat Represents

Surveyed the 22<sup>nd</sup> day of May 1784  
Recorded the 21<sup>st</sup> day of July 1784  
George Salmon D.S.